

お申込・お問合せは

新潟留学センター
<https://nta-niigata.com/>
info@nta-niigata.com

esendlish.com

LATIN AMERICA

Alejandra Jimenez
+971 52 205 2695 (Mobile & WhatsApp)
alejandra@esdubai.com

BRAZIL

Daiana Ramos
+971 50 920 6558 (Mobile & WhatsApp)
daiana@esdubai.com

TURKEY

Hakan Tokok
+971 50 420 8981 (Mobile & WhatsApp)
hakan@esdubai.com

THAILAND

Saranthon Manwajasat
+971 58 110 1196 (Mobile & WhatsApp)
nook@esdubai.com

GCC & MENA

Maha Ouda
+971 52 228 4321 (Mobile & WhatsApp)
maha@esdubai.com

RUSSIA & CIS

Kunduz Kadirova
+971 54 433 0137 (Mobile & WhatsApp)
kunduz@esdubai.com

RUSSIA & CIS

Olga Nikolaenko
+971 52 282 4605 (Mobile & WhatsApp)
olga@esdubai.com

JAPAN

Aiko Satake
+971 58 599 8517 (Mobile & WhatsApp)
japan@esdubai.com

ITALY

Caterina Tragni
+971 52 658 8410 (Mobile & Whatsapp)
italy@esdubai.com

ES London
46-47 Russell Square
WC1B 4JP, London, United Kingdom
Phone: +971 4 39 82815
WhatsApp: +971 50 906 5836
marketing@esdubai.com



English in

LONDON



Provisionally accredited by



for the teaching
of English in the UK

Welcome to

LONDON

E

S provides English language courses of the highest academic quality in the heart of London.

Whether you are looking to develop your language skills for work, education or life, we have the right course for you as well as a dedicated team to help you achieve your goals. We look forward to welcoming you in London, where you will have the ultimate English language learning experience. Start packing your suitcase!





OUR LONDON

SCHOOL

Begin your English language adventures at ES London and experience living and learning in one of the world's most cosmopolitan destinations!

At ES, we understand that there are many reasons why people choose to study English and we will help you achieve your goals. ES offers a wide selection of programmes taught by experienced teachers, who will assist you in accomplishing your learning objectives and settle you into your new course.

ES London is centrally situated in the Bloomsbury neighbourhood on Russell Square (WC1), providing easy access to the heart of London and is just a short walk from St Pancras and Kings Cross station.

Bloomsbury hosts a dynamic wealth of businesses, educational and cultural opportunities and is located adjacent to numerous places of interest and several of London's most renowned landmarks.



TEACHERS

Qualified English language teachers



CLASSES

Maximum class size: 16

Average class size: 10

Minimum age: 18



COURSES

- General English
- English for Business
- IELTS preparation
- Conversation class



FACILITIES

- Free Wi-Fi available within the school
- Quiet study area
- Cafeteria lounge
- Garden





WHY CHOOSE

ES LONDON?

The ES Learning Experience

EXCELLENT RESOURCES

All our teachers are qualified and experienced, and will deliver their lessons using the latest digital classroom technology and learning resources. We invest in tools so that we can provide you with the latest proven technology that makes classes fun and relevant.

LANGUAGE AND SOCIAL PROGRAMME

We love taking English out of the classroom! Providing much more than just a social programme, our team plans activities that will help you develop your English skills while you're having fun!

STUDENTS FROM ALL OVER THE WORLD

With students from over 80 nationalities each year, you'll have to use your English language skills to socialise and make long-lasting friendships.

Guidance & Support

TRACKING YOUR PROGRESS

Your progress will be assessed through regular testing every week, as well as through mid-level and end-of-level tests. All your results are recorded in your personal learning file and at the end of your course you will receive a certificate of achievement, a well as the option of requesting a detailed progress report.

NEXT STEPS

Whether you'd like to take an exam to demonstrate your language level, apply to university or plan any further studies, we're here to help! We also offer a free higher education advisory service for students wishing to take university courses in London.



Outstanding Services

HOMESTAY

At ES, we know your accommodation is just as important as your school. For this reason we have partnered with a leading student housing specialist to offer you a wide range of homestay and residential options to suit your needs and budget.

OPEN DOOR POLICY

If you have concerns or questions about any aspects of your experience, a member of our staff will always be available to help you.

24-HOUR EMERGENCY HELPLINE

A reassuring service for you and your family - our 24-hour emergency helpline provides assistance at any time of the day or night.

Academic Profile

QUALITY TEACHING

Our teachers are qualified and have experience in teaching English to speakers of other languages.

WE DON'T SAY IT, OUR STUDENTS DO!

We carry out regular teacher evaluations and our students consistently rate their courses and teachers 4.5 out of 5 and above.



WHAT OUR STUDENTS

SAY

At ES, learning English is about so much more than just lessons. We really want to help you achieve all your learning objectives while integrating you into our student community.

We pride ourselves in the sense of camaraderie and the family atmosphere of our school and we can promise you that ES will become not just a place of learning but also a second home.

We hope to give you an experience you will cherish forever!

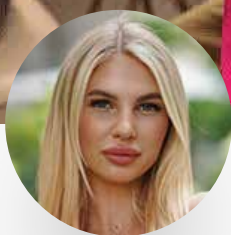
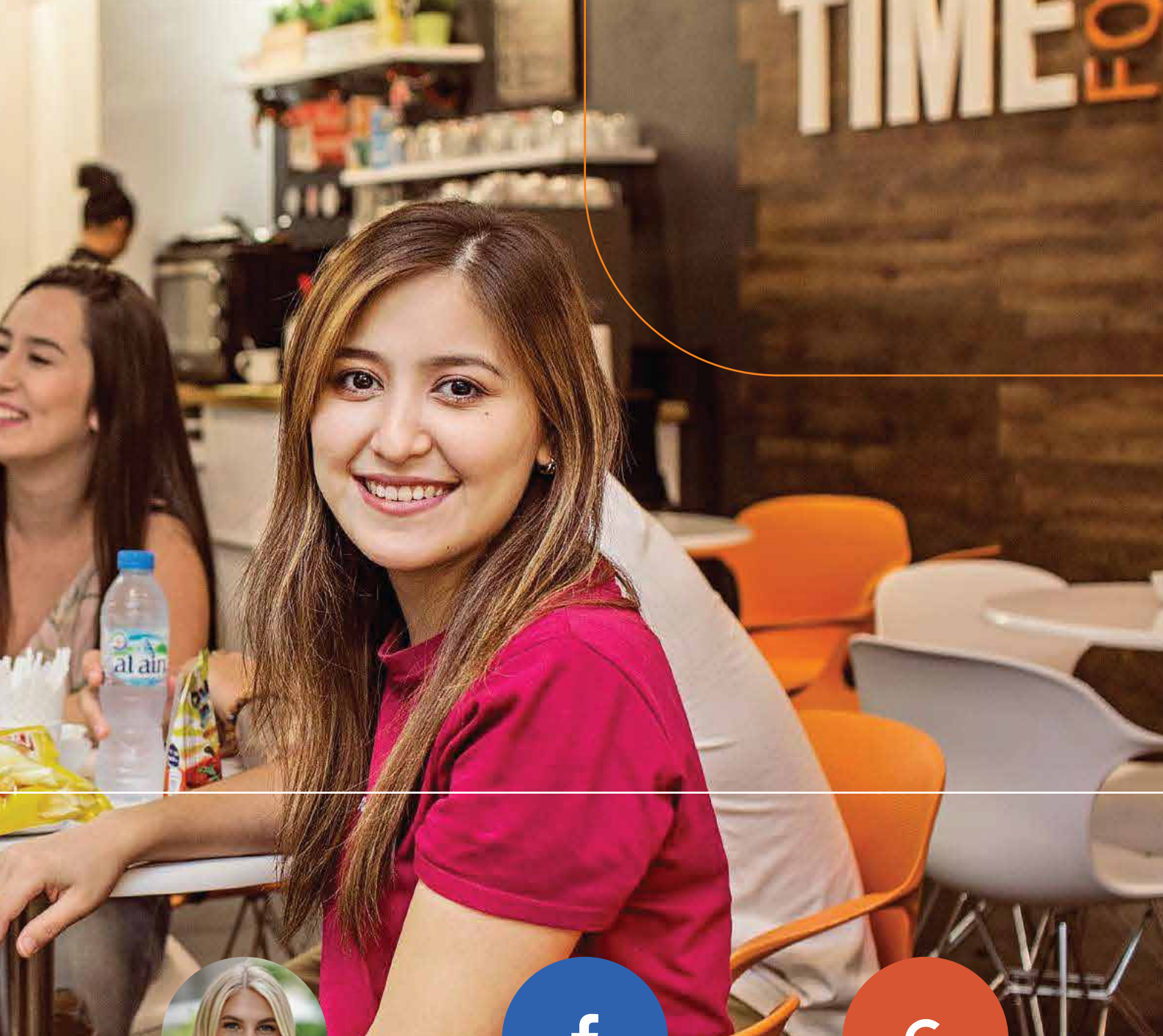


“ My experience with ES has been amazing!

The school has an incredible structure and is made up of excellent teachers and other professionals. I highly recommend it!

Wemerson De Luca

Brazil



This school is so cool! The teachers are professionals and funny!

The school is modern and the food that they cook is delicious.

Kateryna Sydorenko

Ukraine



AVERAGE RATING

4.8



Facebook

(200+ reviews)



AVERAGE RATING

4.9



Google

(400+ reviews)



COMFORTABLE

En-suite room - Student Hotel



WELL EQUIPPED

Gym - Student Residence



CONVENIENT

Tube station within walking distance





RESIDENCE AND

HOMESTAY

At ES, we understand how important your accommodation is and we will strive to help you find the most suitable option for your individual circumstances.

We have partnered with professional accommodation providers to offer you a range of options to make sure you find what you are looking for.

Student Residences

ES has partnered with Britannia Student Services, an accommodation provider officially registered with the British Council. Their portfolio of student properties include locations such as Southwark, Tufnell Park, Liverpool Street and Russell Square.

Britannia Student Services offers single and twin rooms which are fully furnished with built-in wardrobes, beds, and study desks.

The residence also provides additional services such as airport transfers, insurance, kitchen equipment, bathroom equipment and more.

Communal facilities can include:

- Gyms
- Social and study spaces
- 24/7 security and maintenance team on site

Homestay

To help you find your homestay, Britannia offers students London homestays which have been selected for their friendliness and meet the British Council and English UK standards.

There is a great selection of homestays available throughout the city (Zones 1-5) that are conveniently located and close to public transport. Homestay accommodation is a great way for students to socialise and practise their English skills.

Homestay also provides additional services such as airport transfers, insurance, kitchen equipment, bathroom equipment and more.



YOUR

STUDIES

Learner-centered classes

We offer an average class size of 10, which means that you will enjoy personal attention from your teachers, which will help you make faster progress.

Regular testing

You will have an in-class progress test every week, as well as a mid-level and end of level test. These tests will allow your teacher to give you feedback and to help you improve and plan your studies according to your learning objectives. We keep track of your results, which allows us to follow your progress throughout your course and provide you with student report cards at the end of your programme. We also monitor your attendance, which should be at least 80% of your classes.

State of the art facilities

ES is committed to offering you the latest learning facilities to help you enjoy your lessons and make the most of your progress. Our school has interactive LED panels in every classroom. Our student portal also offers you the chance to undertake further study outside of the classroom, based on recommendations from your teachers. Free Wi-Fi is available throughout the whole school.

Complimentary services

To get the most out of your time with us, we also offer you options such as speaking classes, one-on-one sessions and free career guidance.



Our Methodology

Evolve is a communicative course with a task-based approach that helps students achieve their learning objectives.

Why we love using Evolve

- The contextualised practice of grammar and vocabulary makes the learning process more memorable and engaging;
- A wide range of contemporary topics, audio clips and video materials help students discover English in the context of the world;
- The use of Active Teach (a digital version of the student book) also allows teachers to use the interactive smart boards more effectively and to provide students more engaging and didactic lessons.



COURSE

LEVELS

At ES London, we use the Common European Framework of Reference for Languages (CEFR) to determine every student's English level. There are six levels, ranging from A1 (Elementary) to C2 (Proficiency) and we offer an additional Beginner level for students who have never studied English before.

Furthermore, the hours per level have been devised as per Cambridge English guidelines, in terms of recommended guided learning hours. Although you are recommended to complete the entire level, you may also opt to take individual weeks or short programmes as all levels have been divided into 12 rotating learning units which are not a prerequisite to previous or subsequent units.

ELEMENTARY

IELTS 2-3 / TOEIC 151-300 /
CAMBRIDGE KET / CEFR A1

You can understand language used in everyday situations if the speaker speaks slowly and clearly. You will learn to use basic phrases, as well as how to introduce yourself and ask and answer questions about personal details. You will also improve by developing your listening and vocabulary.



10-12 WEEKS

PRE-INTERMEDIATE

IELTS 3-4 / TOEIC 301-400 / CEFR A2

You have a general basic ability to communicate in a limited number of familiar situations in which language is used in everyday life. At this level you will learn to understand the main points of simple texts, learn basic grammar and improve your listening and vocabulary use.



12-14 WEEKS



INTERMEDIATE

IELTS 4-5 / TOEFL 30-35 / TOEIC 401-525 / CAMBRIDGE PET / CEFR B1

You are able to cope linguistically in a range of everyday situations, which require predictable use of language. At this level you will gain a better understanding of the language, offering opinions and describing attitudes, moods and wishes, whilst widening your vocabulary.



12-14 WEEKS

UPPER-INTERMEDIATE

IELTS 5-6 / TOEFL 36-60 / TOEIC 526-750 / CAMBRIDGE FCE / CEFR B2

You are able to handle the main structures of the language with some confidence, demonstrate knowledge of a wide range of vocabulary and use appropriate communication strategies in a variety of social situations. At this level you will develop greater flexibility and an ability to deal with the unexpected, to rely less on fixed patterns of language and to refine your use of grammar and vocabulary.



12-14 WEEKS

ADVANCED

IELTS 6-7 / TOEFL 61-94 / TOEIC 751-900 / CAMBRIDGE CAE / CEFR C1

You are able to use the structures of the language with ease and fluency. You are aware of the relationship between the language and the culture it exists in. At this level you will learn to use the language in a creative and flexible way, with the ability to respond appropriately to unforeseen as well as predictable situations.



10-12 WEEKS



GENERAL

ENGLISH

Whether your aim is to brush up your language skills, improve your English ability, attain a high IELTS score or just study English for the fun of learning, our General English courses will help you achieve your personal objective.

On an ES General English course, you'll develop your language and communication skills, improve your reading, writing, listening and speaking whilst studying a range of topics, depending on your ability. You will also learn new grammar, vocabulary and pronunciation. Our full-time courses consist of 15 hours per week for semi-intensive English classes, and 30 hours per week for intensive classes.

How we measure your progress

There is a progress test every week, followed by feedback from your teacher to set your learning objectives for the following month. Your progress is then recorded in your student file and a progress report is issued at the end of every term or at the end of your course.



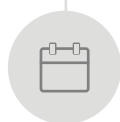
COURSES OFFERED

All year round
Minimum age: 18



LEVELS

Available for Elementary to Advanced



DATES

Our levels last for 12 weeks when taking semi-intensive classes and 6 weeks when taking the intensive option. Although we start every 6 weeks, you can join our programme any Monday as we deliver the course units on a rotation basis.



DURATION

2 to 52 weeks



WEEKLY LESSONS

15 & 30 hours per week, with an option of 4 additional lessons in the evening for specialist courses



TIMETABLES

Morning, afternoon and evening*



ACADEMIC

IELTS

The IELTS (International English Language Testing System) examination is an ideal test for those who are planning to study with us for a university course. The Academic IELTS examination is recognised as an entrance requirement by British, Australian, Canadian and New Zealand universities as well as for secondary vocational and training programmes worldwide. This examination allows you to achieve an international qualification in academic English, as well as gives you proof of your English abilities for employers and visa purposes.

What will I study?

Our IELTS teachers will prepare you for the four components of the IELTS exam - writing, reading, speaking and listening. As part of the course you will have a schedule of different learning activities such as class discussions, report writing, lectures and mock exams to complement your classwork. You will also do regular examination practice under examination conditions to help you acquire good exam techniques. Throughout the course, you will receive feedback, correction and advice as well as homework that is specifically developed to help you improve your reading and writing, which are considered to be the most challenging sections.



COURSES OFFERED

All year round
Minimum age: 18



LEVELS

Available for Intermediate to Advanced



DATES

Please contact admissions@esenglish.com for details



TIMETABLES

Afternoon



STUDENT

PROGRESS

PLACEMENT & ASSESSMENT

Prior to joining any of our programmes, students are required to take an online placement test which assesses their writing and reading ability. This is used to determine each individual student's study plan. Upon arrival, a thorough speaking assessment finalizes which class the student is to attend and if there is any requirement for additional lessons.

SPEAKING ASSESSMENT AND MONITORING

Weekly monitoring and assessment of our students' speaking ensures their aptitude in the general English speaking world. Our individual student reports provide an assessment overview of the students' pronunciation, range of grammar and vocabulary, as well as the overall fluency. Students cannot progress to the following level without successfully adhering to these essential criteria.

INDIVIDUAL STUDENT REPORTS (ISRs)

ISRs provide individual feedback to the students halfway through the course and at the end of their level. They indicate whether the student is ready to move up a level or not and also provide information about the student's test results throughout the entire course. The reports also give feedback on their level of speaking, attitude to learning, attendance and class participation. The ISRs allow the instructor to best advise the students' progress.

STUDENT PROGRESS

ES measures its students' progress in three ways:

WEEKLY PROGRESS TESTS (Min. pass rate: 80%)

These progress tests are used to monitor progress and are comprised of language focus, functional language, vocabulary and pronunciation based on bi-weekly units. The students' test results are recorded and appropriate feedback is provided to the student.

MID-TERM TEST (Min. pass rate: 80%)

Mid-term tests are used to determine the students' mid-way course progress. This is a paper test comprised of grammar focus, functional language, vocabulary, pronunciation, reading and writing based on the first half of the course book's content. Our instructors record results and provide individual student reports before the end of the test week, to be given to the student.

END OF COURSE EXAM (Min. pass rate: 80%)

The End of Course exam is used to determine if the student has mastered the skills and fluency of their current level. It guides the instructor's decision as to whether the student is ready to progress to the next level or not. The paper test is comprised of grammar focus, functional language, vocabulary, pronunciation, reading and writing based on the course book's entire content. An individual student report is completed and feedback is provided to advise the students on their level transfer, if successful.

STUDENT LEVEL PROGRESSION

At ES, we use the Common European Framework of Reference for Language (CEFR) to determine our students' English level. There are six levels, ranging from A1 (Elementary) to C2 (Proficiency) and we offer an additional beginner level for students who have never studied English before.

The hours per level have been devised as per the Cambridge English guidelines, in terms of recommended guided learning hours. Each level at ES consists of 180 lessons of 45 minutes each, plus self-study recommended time of an additional 45 hours over the course of 12 weeks if studying semi-intensively, and 6 weeks if following the intensive programme.

6
WEEKS

ACADEMIC ENGLISH

(IELTS 6-7 CEFR C1)

The student is able to analyse and interpret subject specific texts and synthesize complex information. The student has acquired greater autonomy and has developed critical thinking, as well as building key academic vocabulary.

6
WEEKS

UPPER-INTERMEDIATE

(IELTS 5-6 CEFR B2)

The student is able to understand the main ideas of complex text on both concrete and abstract topics, including technical discussions in his/her field of specialization. The student can also produce clear, detailed text on a wide range of subjects and explain a viewpoint on a topical issue, giving the advantages and disadvantages of various options.

6
WEEKS

INTERMEDIATE

(IELTS 4-5 CEFR B1)

The student is able to understand the main points of clear, standard input on familiar matters regularly encountered in work, school and leisure, as well as produce simple connected text on topics which are familiar or of personal interest. The student can also describe experiences and events and briefly give reasons and explanations for opinions and plans.

6
WEEKS

PRE-INTERMEDIATE

(IELTS 3-4 CEFR A2)

The student can understand sentences and frequently used expressions related to areas of most immediate relevance. The student can also describe in simple terms aspects of his/her background, immediate environment and matters in areas of immediate need.

6
WEEKS

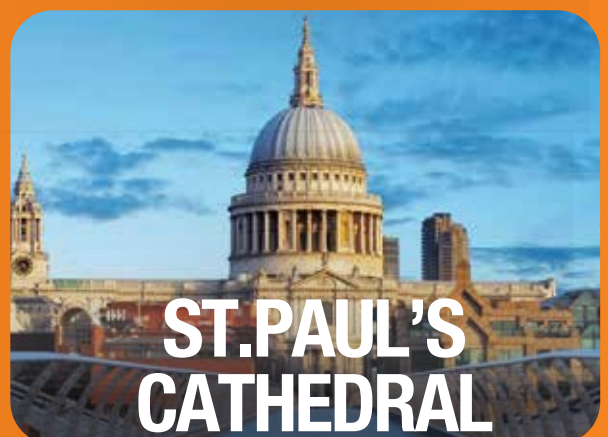
ELEMENTARY

(IELTS 2-3 CEFR A1)

The student understands and uses familiar everyday expressions and very basic phrases aimed at the satisfaction of needs of a concrete type, as well as being able to introduce himself/herself and others and ask and answer questions about personal details such as where he/she lives, people he/she knows and things he/she has.

Social Programme

Here are some of the incredible activities you can enjoy!



INCREDIBLE

The best
EXPERIENCE
in London!

